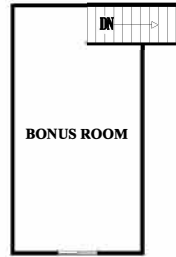
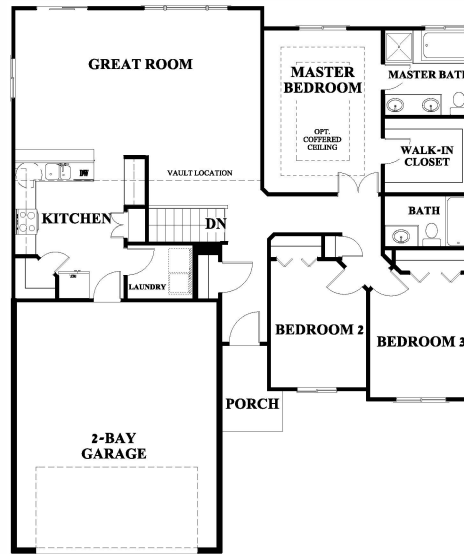


JACKSEN - 1517 SQ. FT.

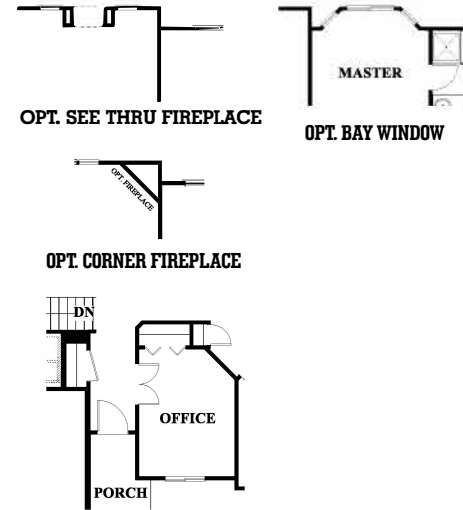
One-Story | 3 Bedrooms | 2 Bathroom | 2-Car Garage



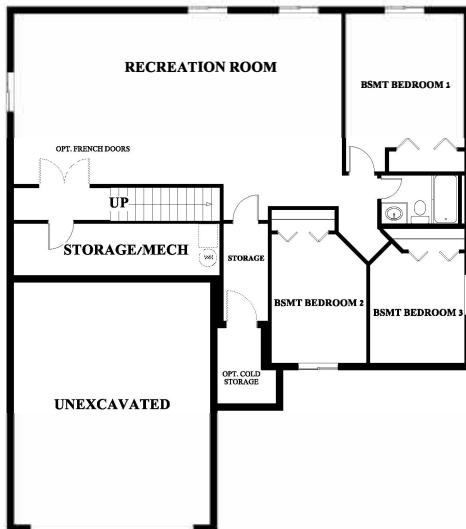
OPT. BONUS ROOM - 341 SQ. FT.



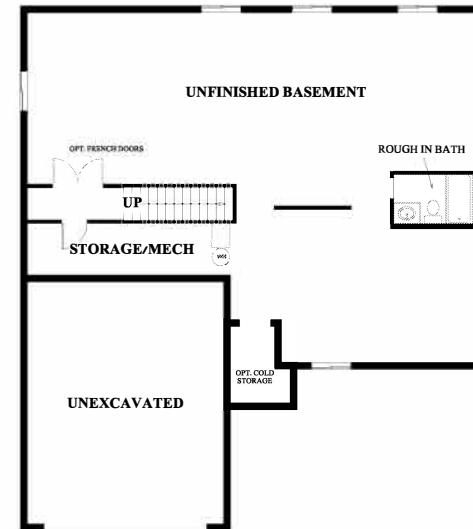
MAIN LEVEL



OPT. OFFICE



OPT. FULL BASEMENT - 1496 SQ. FT.



UNFINISHED BASEMENT

PO BOX 70, GREEN RIVER, WY 82935

NEWPEAK
CONSTRUCTION COMPANY

WWW.NEWPEAKCC.COM

New Peak Construction Co. reserves the right to change or modify the land, floor plans, specifications, design, options, prices or terms without notice or obligation. Square footages are approximate. Floor plans and renderings are a conception that may vary from actual home.