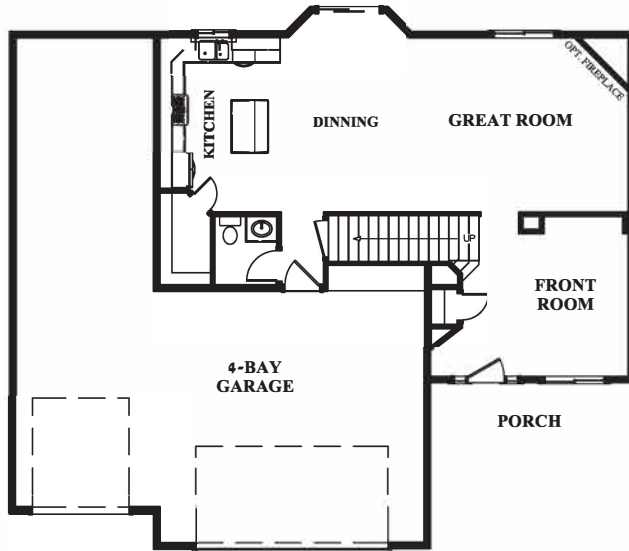
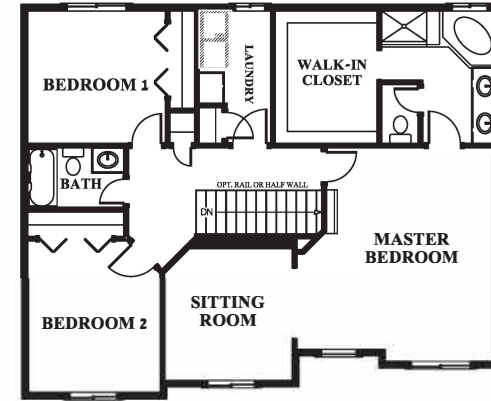


MEDICINE BOW - 2,259 SQ. FT.

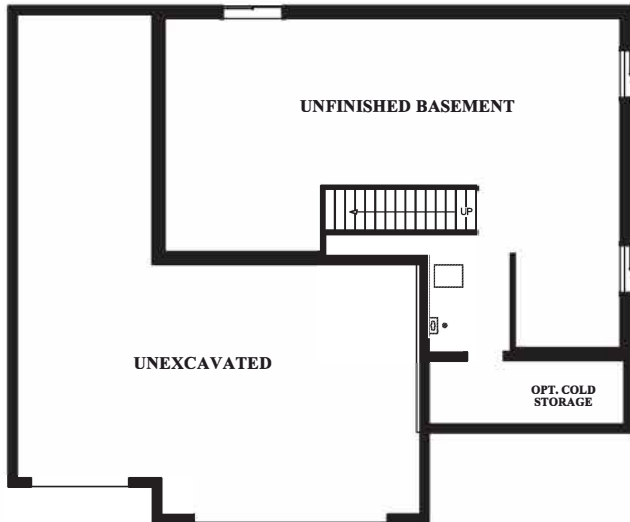
Two-Story | 3 Bedrooms | 2.5 Bathroom | 4-Car Garage



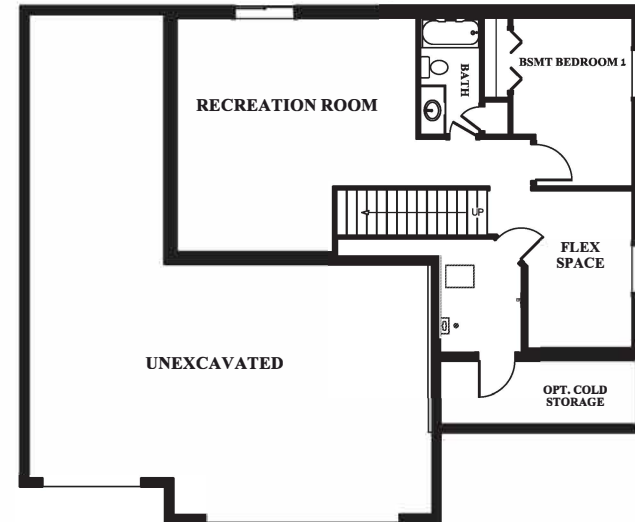
MAIN LEVEL



UPPER LEVEL



UNFINISHED BASEMENT



OPT. FULL BASEMENT - 1,107 SQ. FT.

PO BOX 2285, Laramie, WY 82073

NEWPEAK
CONSTRUCTION COMPANY

WWW.NEWPEAKCC.COM

New Peak Construction Co. reserves the right to change or modify the land, floor plans, specifications, design, options, prices or terms without notice or obligation. Square footages are approximate. Floor plans and renderings are a conception that may vary from actual home.