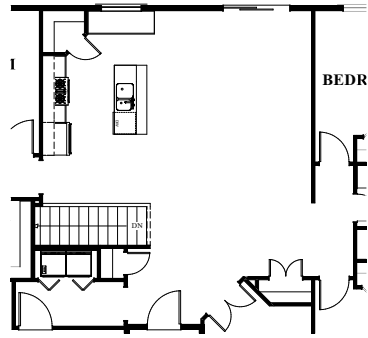


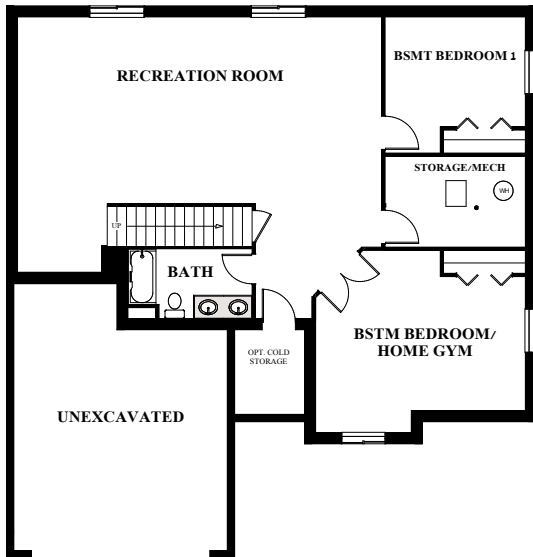
# The Teewinot - 1550 SQ. FT.

One-Story | 4 Bedrooms | 2 Bathroom | 2-Car Garage

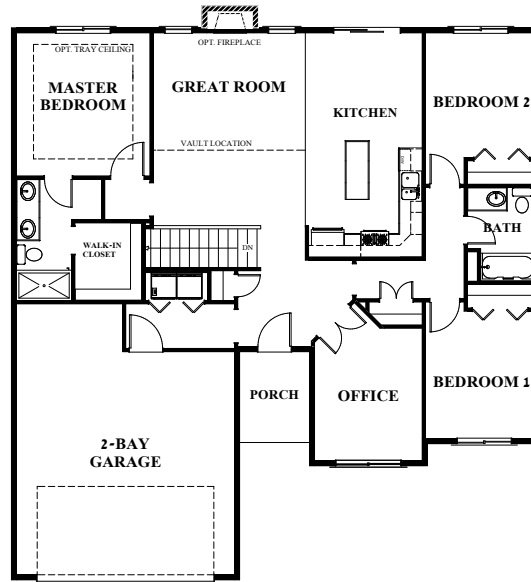
OPT. MASTER BDRM EXTENSION



OPT. REVERSE KITCHEN LAYOUT

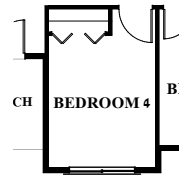


OPT. FULL BASEMENT - 1610 SQ. FT.

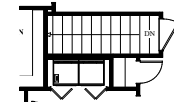


MAIN LEVEL

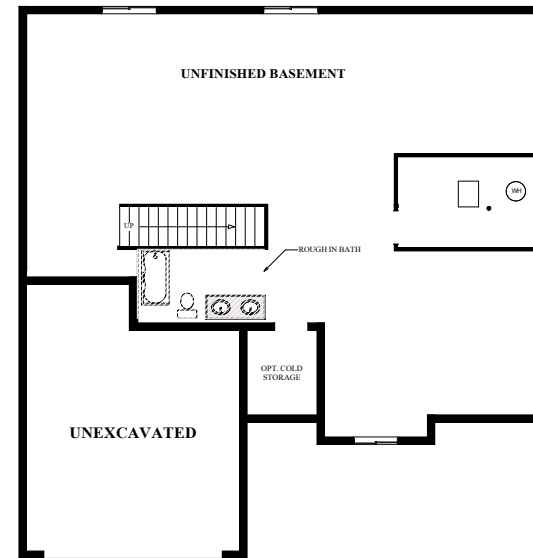
OPT. BAY DOOR



OPT. 4TH BEDROOM



OPT. ENCLOSED STAIR CASE



BASEMENT

PO BOX 70, GREEN RIVER, WY 82935

**NEWPEAK**  
CONSTRUCTION COMPANY

WWW.NEWPEAKCC.COM

New Peak Construction Co. reserves the right to change or modify the land, floor plans, specifications, design, options, prices or terms without notice or obligation. Square footages are approximate. Floor plans and renderings are a conception that may vary from actual home.