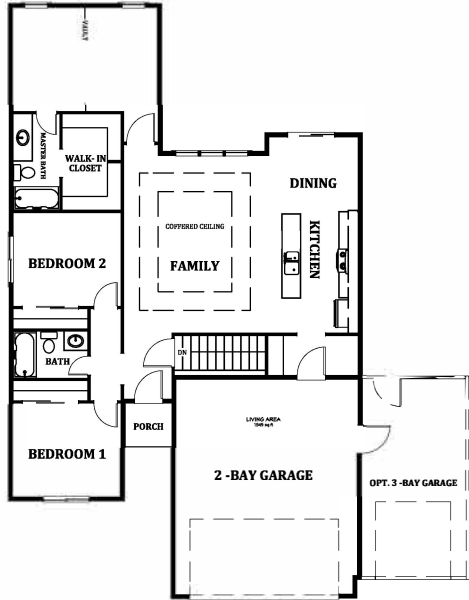
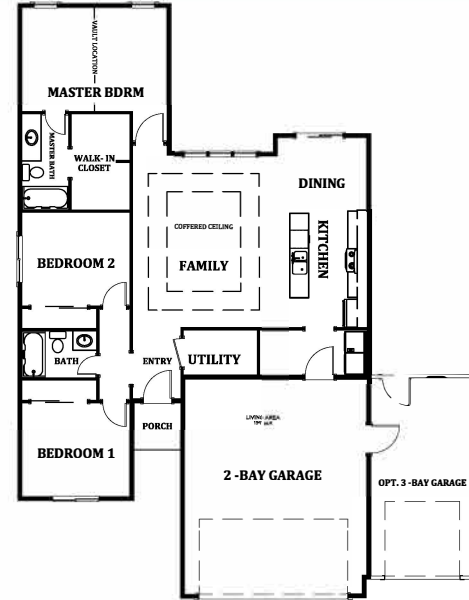


THE WISTER - 1345 SQ. FT.

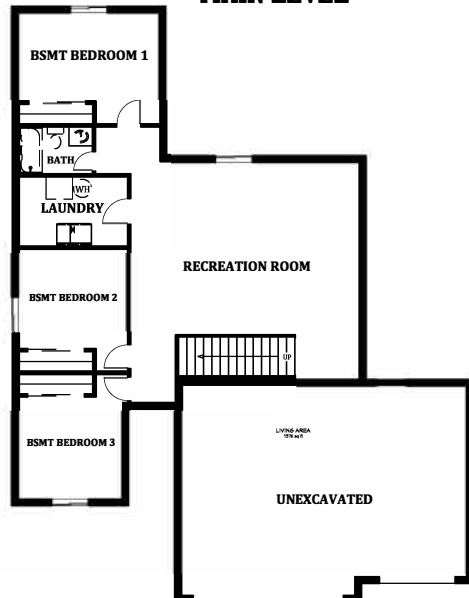
One-Story | 3 Bedrooms | 2 Bathroom | 2-Car Garage



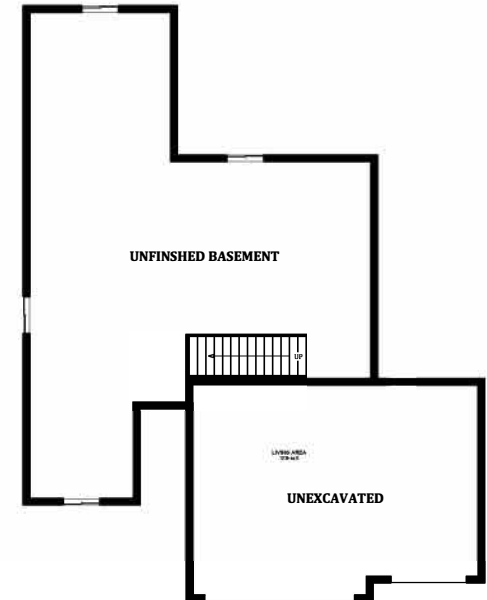
MAIN LEVEL



OPT. CRAWL SPACE MAIN LEVEL



OPT. FULL BASEMENT - 1376 SQ. FT.



UNFINISHED BASEMENT

PO BOX 2285, Laramie, WY 82073

NEWPEAK
CONSTRUCTION COMPANY

WWW.NEWPEAKCC.COM